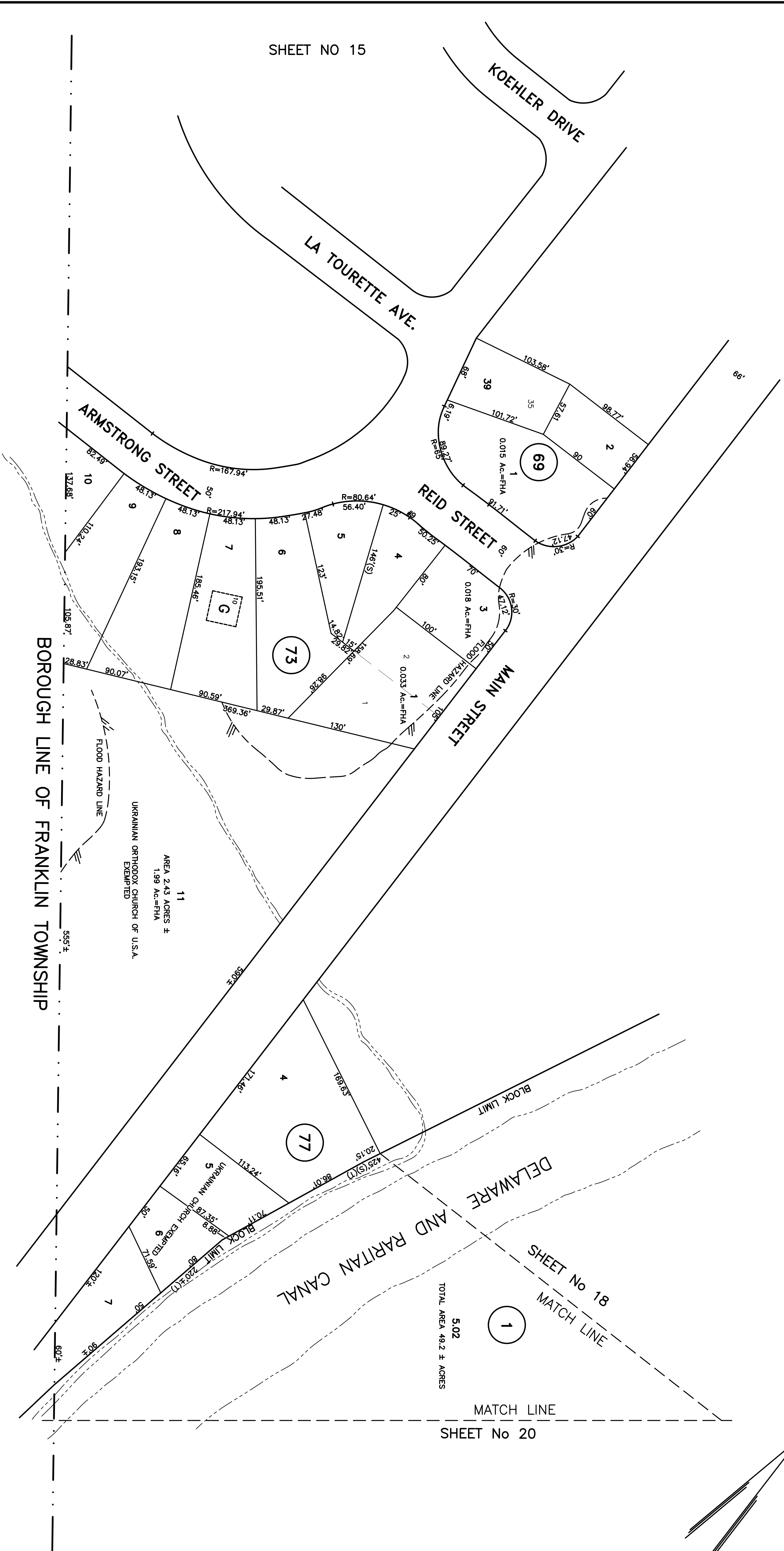
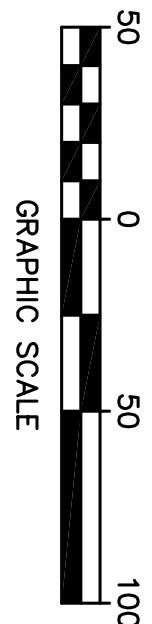


REVISIONS		
DATE	NAME	NO.
DECEMBER, 1958	NOT KNOWN	
JUNE, 1969	HERBERT A. LAUTERWALD, JR., P.E. & L.S.	20890
SEPTEMBER, 1991	HERBERT A. LAUTERWALD, JR., P.E. & L.S.	20890
APRIL 30, 2006	THOMAS J. HERITS, P.E. & P.L.S.	23762
OCT. 6, 2006	THOMAS J. HERITS, P.E. & P.L.S.	23762



10-REVISED MAP OF ALVIN MANOR



THIS TAX MAP SHEET IS A SCANNED COPY OF THE MAP PREPARED BY BTJ C.J. KUPPER, C.E. DATED 1946 AND REVISED THEREON. ALL REVISIONS ARE FILED IN THE ENGINEER'S OFFICE.

NEW JERSEY DEPARTMENT OF TAXATION AND FINANCE
 APPROVED AS A TAX MAP PURSUANT TO THE PROVISIONS OF CHAPTER 173, LAWS OF 1946
 FRANK E. WALSH
 DIRECTOR, DIVISION OF TAXATION
 BY THOMAS J. FRAYER
 CHIEF ENGINEER AND SUPERVISOR
 DATE: SEPT. 4, 1946 SERIAL NO. 115

TAX MAP
 BOROUGH OF SOUTH BOUND BROOK
 SOMERSET COUNTY, NEW JERSEY
 SCALE 1"=50'
 C.J. KUPPER, C.E.
 1946
 TO SHOW CONDITIONS AS OF APRIL 2006