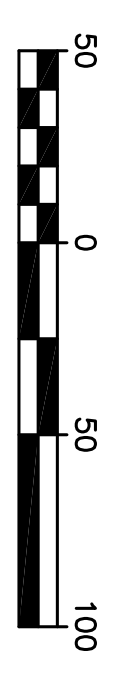
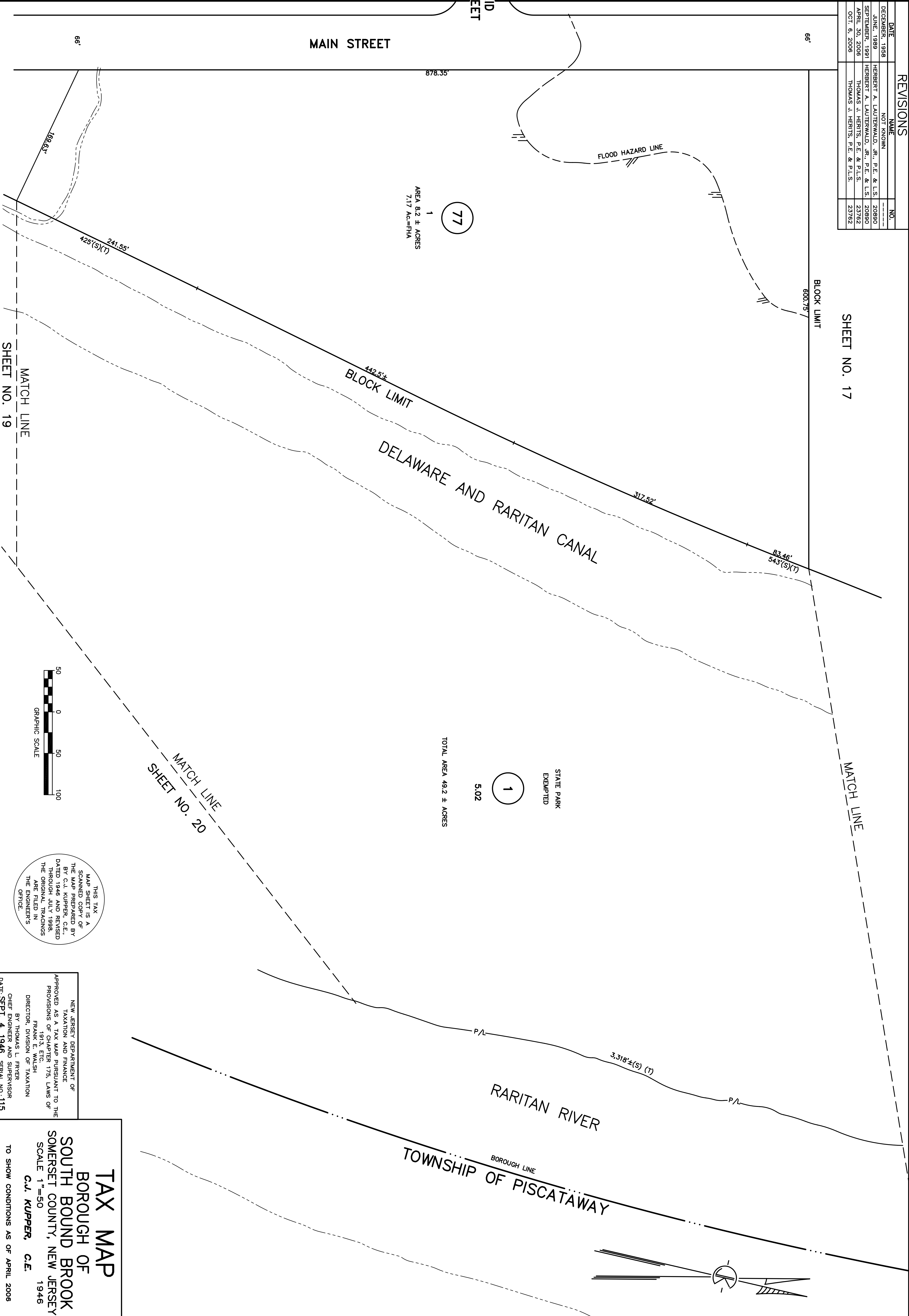


REVISIONS		
DATE	NAME	NO.
DECEMBER, 1958	NOT KNOWN	
JUNE, 1989	HERBERT A. LAUTERWALD, JR., P.E. & L.S.	20890
SEPTEMBER, 1991	HERBERT A. LAUTERWALD, JR., P.E. & L.S.	20890
APRIL 30, 2006	THOMAS J. HERGIS, P.E. & P.L.S.	23762
OCT. 6, 2006	THOMAS J. HERGIS, P.E. & P.L.S.	23762

SHEET NO. 17



THIS TAX MAP SHEET IS A SCANNED COPY OF THE MAP PREPARED BY C.J. KUPPER, C.E., DATED 1946 AND REVISED THROUGH JULY 1998. THE ORIGINAL TRACINGS ARE FILED IN THE ENGINEERS OFFICE.

NEW JERSEY DEPARTMENT OF TAXATION AND FINANCE
APPROVED AS A TAX MAP PURSUANT TO THE PROVISIONS OF CHAPTER 173, LAWS OF 1946
FRANK E. WALSH
DIRECTOR, DIVISION OF TAXATION
BY THOMAS L. FRERER
CHIEF ENGINEER AND SUPERVISOR
DATE SEPT. 4, 1946 SERIAL NO. 115

TAX MAP
BOROUGH OF SOUTH BOUND BROOK
SOMERSET COUNTY, NEW JERSEY
SCALE 1" = 50'
C.J. KUPPER, C.E.
1946
TO SHOW CONDITIONS AS OF APRIL 2006