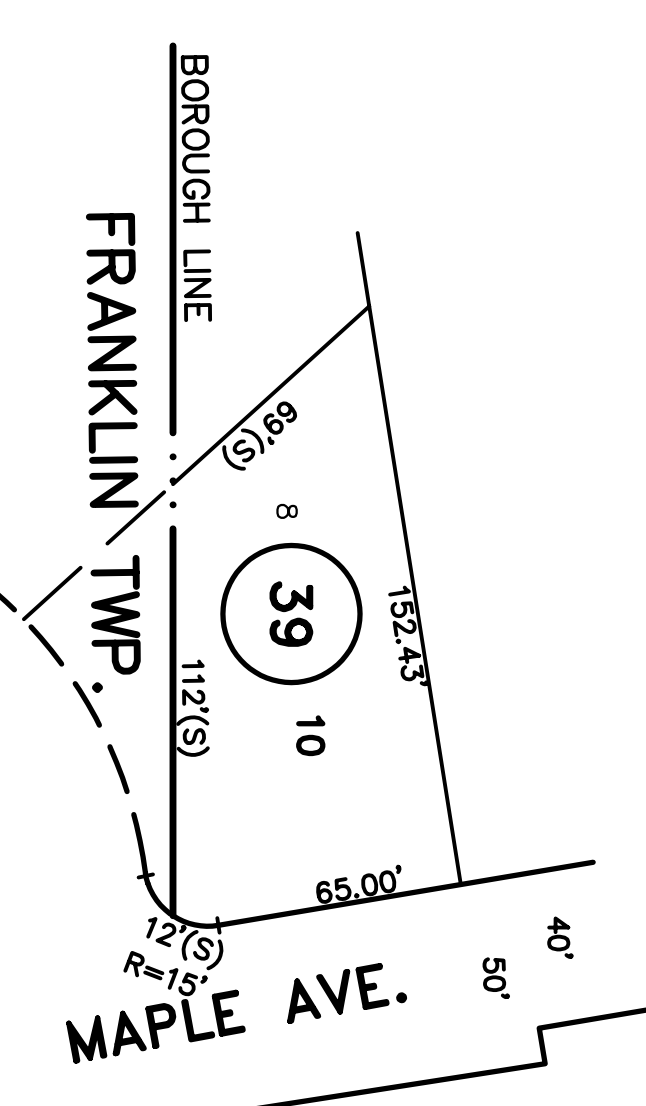
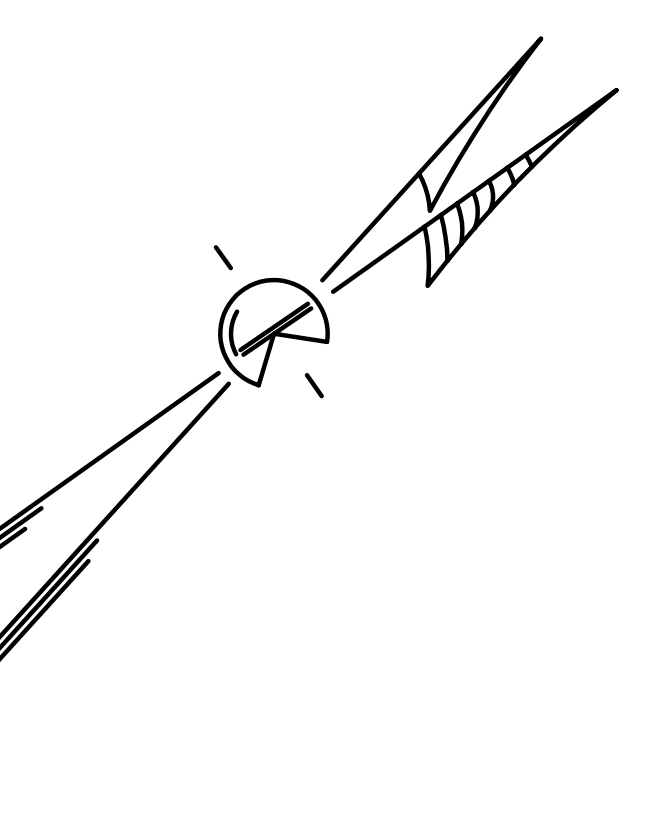


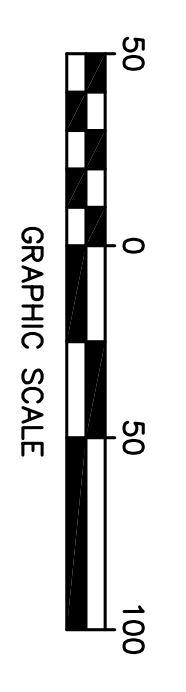
DATE	NAME	NO.
DECEMBER, 1938	NOT KNOWN	
JUNE, 1989	HERBERT A. LAUTERWALD, JR., P.E. & L.S.	20890
SEPTEMBER, 1991	HERBERT A. LAUTERWALD, JR., P.E. & L.S.	20890
JULY 5, 1998	HERBERT A. LAUTERWALD, JR., P.E. & L.S.	20890
APRIL 30, 2006	THOMAS J. HERITS, P.E. & P.L.S.	23782
OCT. 6, 2006	THOMAS J. HERITS, P.E. & P.L.S.	23782
JANUARY 9, 2007	THOMAS J. HERITS, P.E. & P.L.S.	23782
JUNE 15, 2007	THOMAS J. HERITS, P.E. & P.L.S.	23782

**REVISIONS**



THIS TAX MAP SHEET IS A SCANNED COPY OF THE MAP PREPARED BY C.J. KUPPER, C.E., DATED 1946 AND REVISED THROUGH JULY 1998. THE ORIGINAL TRACINGS ARE FILED IN THE ENGINEERS' OFFICE.

- 3-BOULEVARD PLAZA
- 4-BOULEVARD TERRACE
- 9-CATHARINE CRODREY TRACT
- 11-OAK HILL ESTATES
- 12-SHANNON ESTATES #1474
- 13-SHANNON ESTATES WEST # 1542
- 16-BARBARA ESTATES



NEW JERSEY DEPARTMENT OF TAXATION AND FINANCE  
APPROVED AS A TAX MAP PURSUANT TO THE PROVISIONS OF CHAPTER 175, LAWS OF 1913, ETC.  
FRANK E. WALSH  
DIRECTOR, DIVISION OF TAXATION  
BY THOMAS L. FRYER  
CHIEF ENGINEER AND SUPERVISOR  
DATE: SEPT. 4, 1946 SERIAL NO. 115

**TAX MAP**  
**BOROUGH OF SOUTH BOUND BROOK**  
SOMERSET COUNTY, NEW JERSEY  
SCALE 1"=50'  
C.J. KUPPER, C.E.  
1946

TO SHOW CONDITIONS AS OF APRIL 2006