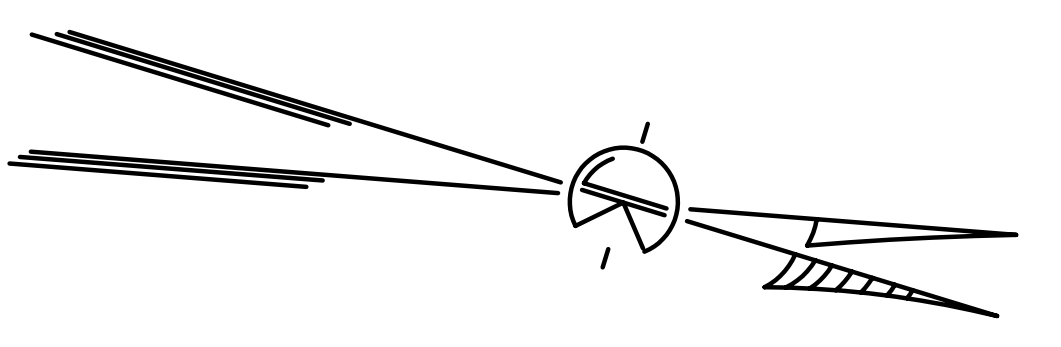
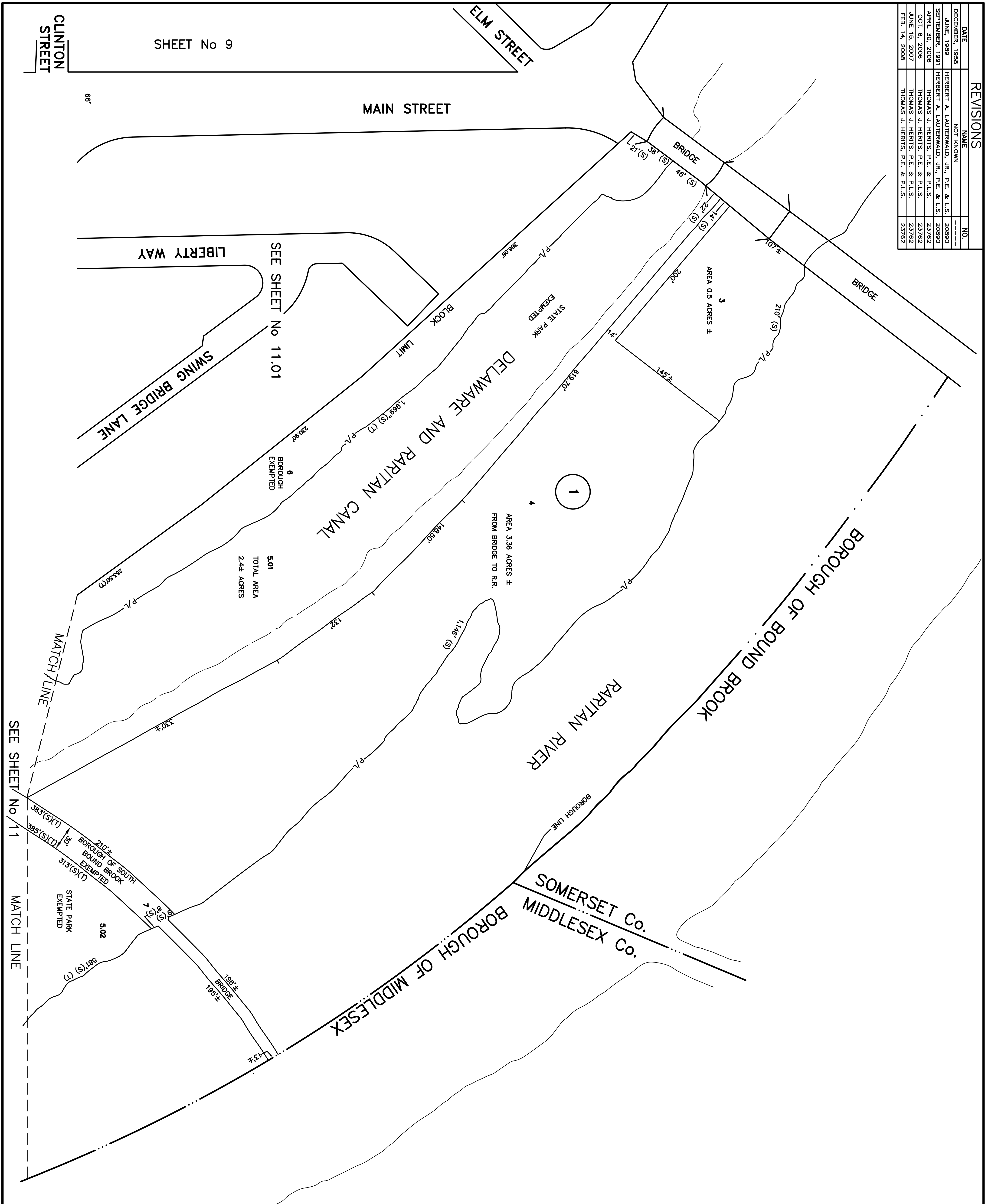


REVISIONS		
DATE	NAME	NO.
DECEMBER, 1998	NOT KNOWN	---
JUNE, 1999	HERBERT A. LAUTERWALD, JR., P.E. & L.S.	20890
SEPTEMBER, 1991	HERBERT A. LAUTERWALD, JR., P.E. & L.S.	20890
APRIL 30, 2006	THOMAS J. HERITS, P.E. & P.L.S.	23782
OCT. 6, 2008	THOMAS J. HERITS, P.E. & P.L.S.	23782
JUNE 15, 2007	THOMAS J. HERITS, P.E. & P.L.S.	23782
FEB. 14, 2008	THOMAS J. HERITS, P.E. & P.L.S.	23782



THIS TAX MAP SHEET IS A SCANNED COPY OF THE MAP PREPARED BY C.J. KUPPER, C.E. DATED 1946 AND REVISED THROUGH JULY 1998. THE ORIGINAL TRACINGS ARE FILED IN THE ENGINEER'S OFFICE.



NEW JERSEY DEPARTMENT OF TAXATION AND FINANCE  
APPROVED AS A TAX MAP PURSUANT TO THE PROVISIONS OF CHAPTER 175, LAWS OF 1913, ETC.  
FRANK E. WALSH  
DIRECTOR, DIVISION OF TAXATION  
BY THOMAS L. FRYER  
CHIEF ENGINEER AND SUPERVISOR  
DATE: SEPT. 4, 1946 SERIAL NO. 115

**TAX MAP**  
**BOROUGH OF SOUTH BOUND BROOK**  
**SOMERSET COUNTY, NEW JERSEY**  
SCALE 1"=50'  
C.J. KUPPER, C.E.  
1946  
TO SHOW CONDITIONS AS OF APRIL 2006

SHEET No 9

CLINTON STREET