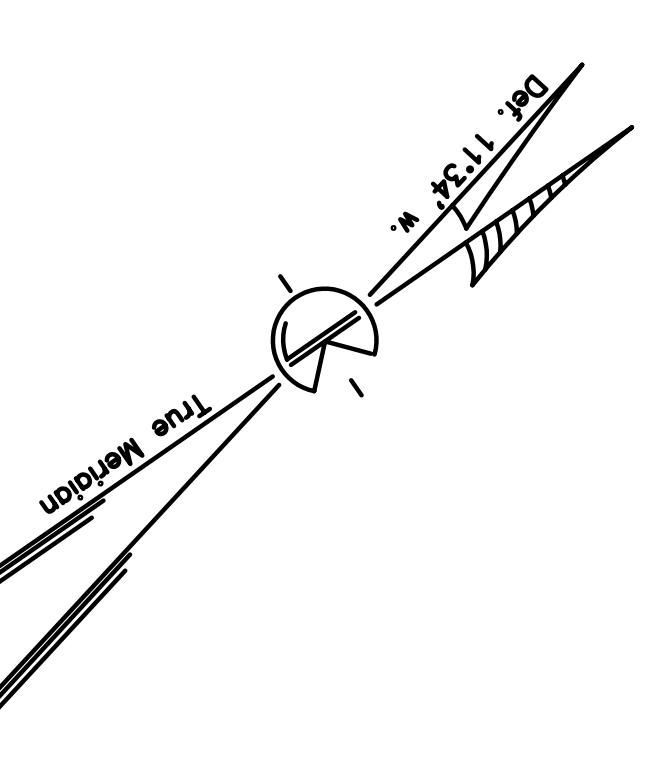
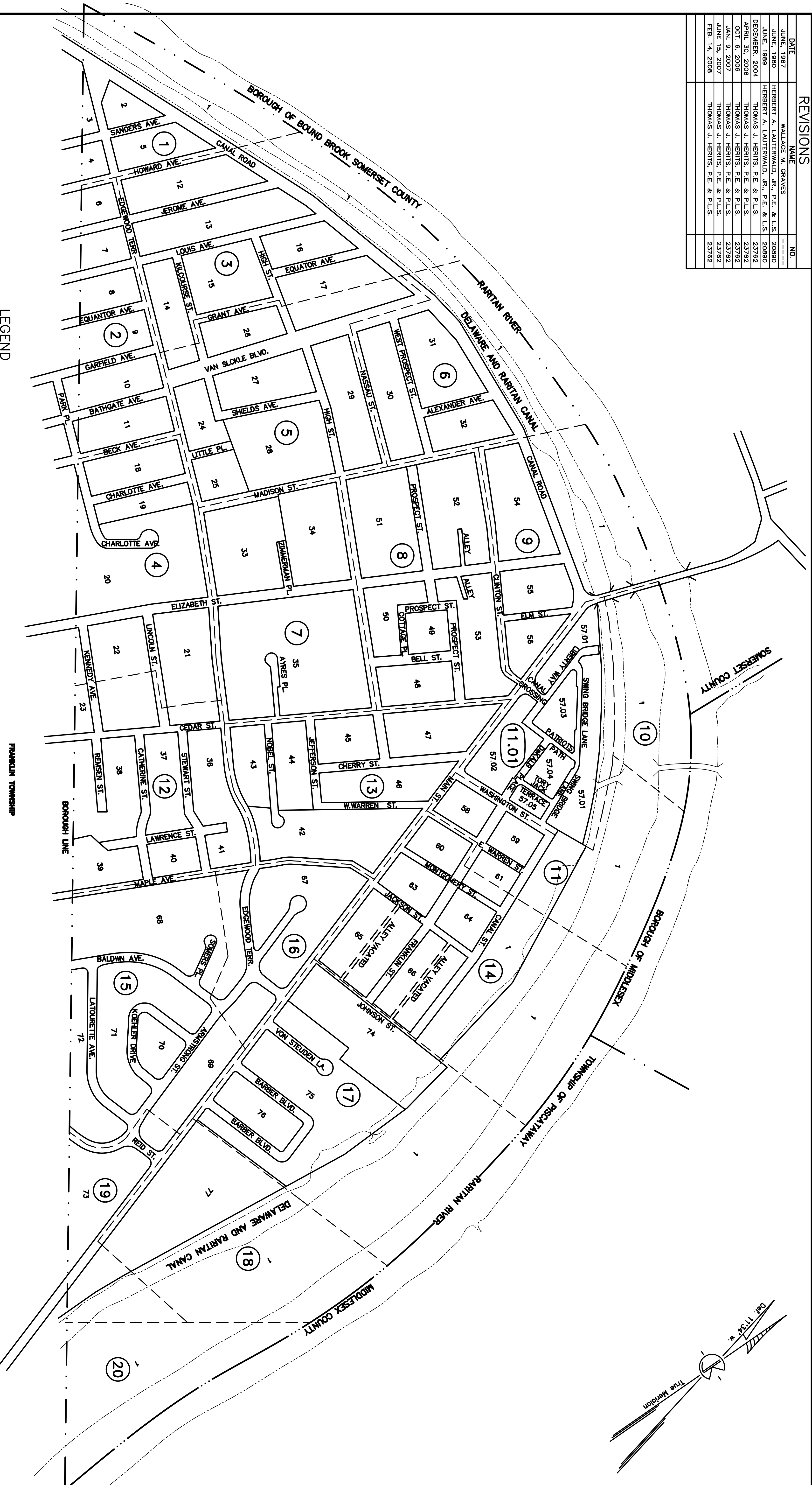


REVISIONS		
DATE	NAME	NO.
JUNE, 1987	WALLACE M. GRAVES	---
JUNE, 1989	HERBERT A. LAUTERWALD, JR., P.E. & L.S.	20890
DECEMBER, 2004	HERBERT A. LAUTERWALD, JR., P.E. & L.S.	20890
APRIL 30, 2006	THOMAS J. HERITS, P.E. & P.L.S.	23762
OCT. 6, 2006	THOMAS J. HERITS, P.E. & P.L.S.	23762
JAN. 9, 2007	THOMAS J. HERITS, P.E. & P.L.S.	23762
JUNE 15, 2007	THOMAS J. HERITS, P.E. & P.L.S.	23762
FEB. 14, 2008	THOMAS J. HERITS, P.E. & P.L.S.	23762



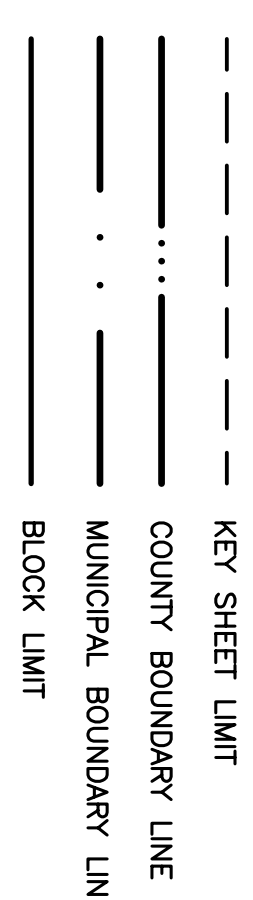
NEW JERSEY DEPARTMENT OF TAXATION AND FINANCE
APPROVED AS A TAX MAP PURSUANT TO THE PROVISIONS OF CHAPTER 175, LAWS OF 1913, ETC.
FRANK E. WALSH
DIRECTOR, DIVISION OF TAXATION
BY THOMAS L. FRYER
CHIEF ENGINEER AND SUPERVISOR
DATE: SEPT. 4, 1946 SERIAL NO.: 115

TAX MAP
BOROUGH OF
SOUTH BOUND BROOK
SOMERSET COUNTY, NEW JERSEY
SCALE 1" = 250'
C.J. KUPPER, C.E.
1946

TO SHOW CONDITIONS AS OF APRIL 2006

LEGEND

- 2 KEY MAP
ALL NUMBERS ON INDEX MAP IN CIRCLES INDICATE SHEET NUMBERS.
- 70 ALL NUMBERS ON INDEX MAP NOT IN CIRCLES INDICATE BLOCK NUMBERS.
- 5 DETAIL SHEETS
ALL NUMBERS IN CIRCLES ON DETAILS MAPS INDICATE NEW (TAX MAP) BLOCK NUMBERS.
- 3 ALL NUMBERS IN DOTTED SQUARES ON DETAILS MAPS INDICATE OLD (DEVELOPMENT MAP) BLOCK NUMBERS.
- 27 HEAVY NUMBERS NEITHER IN CIRCLES NOR SQUARES ON DETAIL MAPS AND USUALLY AT FRONT OF LOTS INDICATE NEW (TAX MAP) LOT NUMBERS LIGHT NUMBERS NEITHER IN CIRCLES NOR SQUARES ON (DEVELOPMENT MAP) LOT NUMBERS.



I HEREBY CERTIFY THAT THIS MAP HAS BEEN REVISED UNDER MY IMMEDIATE SUPERVISION, AND COMPLES WITH THE LAWS OF THE STATE OF NEW JERSEY.

THOMAS J. HERITS
NEW JERSEY PROFESSIONAL ENGINEER & LAND SURVEYOR LICENSE NO. 23762

THIS TAX MAP SHEET IS A SCANNED COPY OF THE MAP PREPARED BY C.J. KUPPER, C.E., DATED 1946 AND REVISED THROUGH JULY 1998. THE ORIGINAL TRACINGS ARE IN THE ENGINEER'S OFFICE.